

Trailhead ADA

\$42,500



Designer Notes

Designed to accompany the Wasted conveyor toilet, the Trailhead ADA building was designed to according to the specifications of the Americans with Disabilities Act. Transportation and handling, assembly, and the use of materials require minimal or no maintenance over several years, in a wide range of diverse environments.

The Trailhead ADA meets and exceeds these expectations, while providing a very comfortable and memorable user experience. Strategically designed as a modular system, the individual components can be easily carried into semi-remote locations and be put together with minimal tools at a fraction of the traditional wood and concrete alternatives. The building is made from sturdy lightweight powder coated aluminum components, making it resistant to corrosion. The tongue-in-groove recycled plastic lumber slats will not rot or absorb moisture, and can be sprayed with bleach or disinfectant without damage. After cleaning, excess water simply drains out the sides from the raised walls. The unit is theft and tamper proof. The translucent one-piece roof provides plenty of light, but it does not compromise its strength and acts as an effective barrier against sun, wind and rain.

The outhouse extension portion covers the enlarged decomposition pits where the solid waste breaks down. The trap door can be locked to ensure no tampering with the solid material or conveyor belt system.

A Trailhead ADA double stall is available upon request.

Product Specifications

Re-Plast 100% Recycled Plastic Tongue and Groove Boards

Made from post-consumer and post-industrial waste plastic, the material is ecologically friendly and attractive. For this application the boards provide maximum durability with minimum maintenance required over their lifespan. Boards will not slip, warp, or absorb moisture making them easy to clean and to keep germs and odors under control.

Colors Available for Re-Plast Lumber



Durable Powder Coated Cast Aluminum Frames

Standard Colors

Brown Slate, Victor Ridge II, Nordic Lichen, Timeless Rust, Grey Gold, Textured Silver, Precious Sand, Groovy Red, Black Textured, Earth Clay, Noble Bronze, Modern Khaki, Flame Red, Pastel Orange, Signal Violet, Traffic Yellow, Ultramarine Blue, Water Blue, Yellow Green

Product Details

- Long Lasting Stainless Steel Hardware
- Heavy Duty Door Hinge
- Durable UV Stable Polycarbonate Roof
- Adjustable Aluminum Vent Stack Support
- Easy assembly for 2 people in less than 2 hours

Shipping Dimensions

Ships unassembled on a 84L x 72W x 36H pallet.
Total Weight 1650lbs

Product Dimensions

Height: 102 inches / 260 cm
Depth: 80 inches / 204 cm
Width: 68 inches / 173 cm
Weight: 1650 lbs / 748.5 kg

Recycled Content

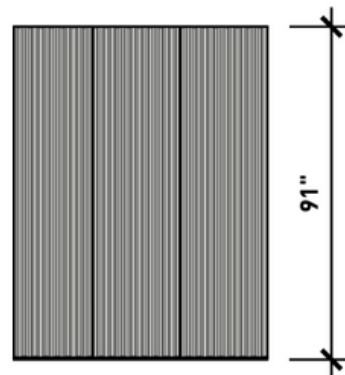
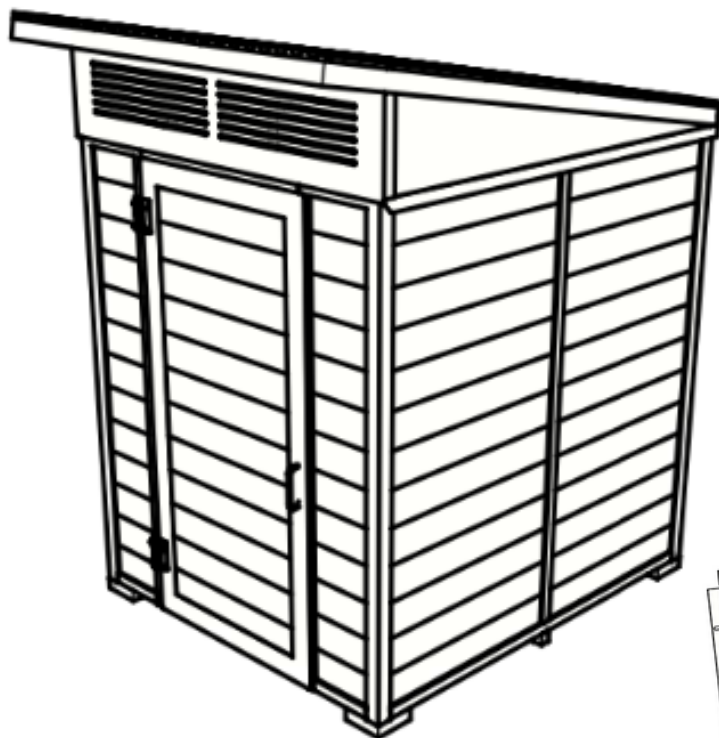
65% Recycled Content By Weight
100% Recyclable

Customized Solutions

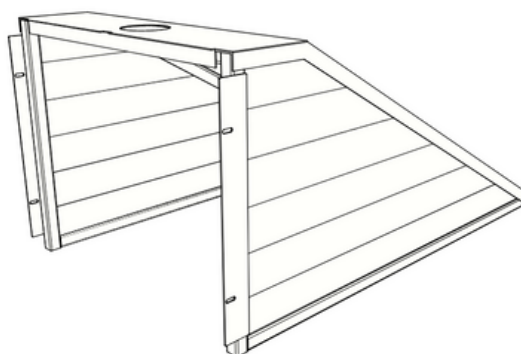
Custom Powder Coating (Setup Charges May Apply)
Urinal, toilet paper dispenser, and sanitizer dispenser are not included. They can be provided if requested.

All Aluminum Floor is available.

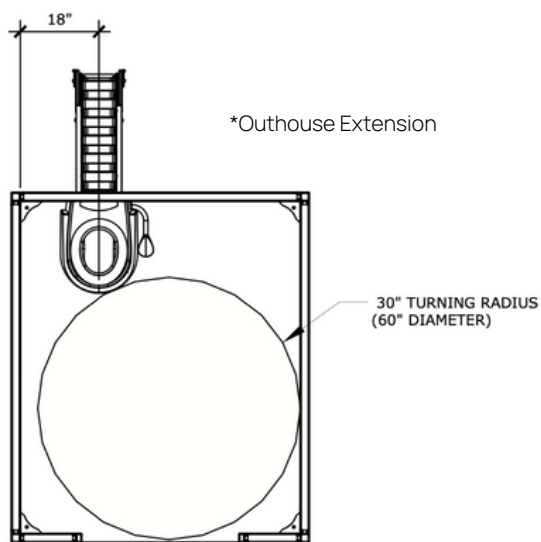
Trailhead ADA



*Roof Dimensions



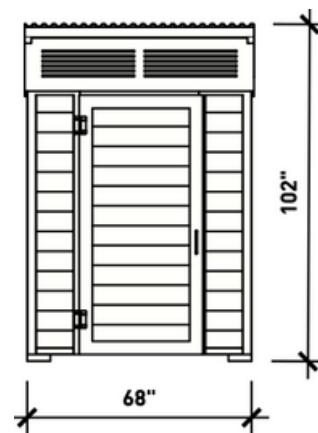
*Outhouse Extension



*Interior Dimensions



*Side Dimensions



*Front Dimensions