

# Trailhead Single

\$28,000



## Designer Notes

Designed to accompany the Wasted\* conveyor toilet, the Trailhead Single building was designed at the request of parks departments and addresses many of the issues typically associated with outdoor latrine buildings in semi-remote locations. Transportation and handling, assembly, and the use of materials require minimal or no maintenance over several years, in a wide range of diverse environments.

The Trailhead Single meets and exceeds these expectations, while providing a very comfortable and memorable user experience. Strategically designed as a modular system, the individual components can be easily carried into semi-remote locations and be put together with minimal tools at a fraction of the traditional wood and concrete alternatives. The building is made from sturdy lightweight powder coated aluminum components, making it resistant to corrosion. The tongue-in-groove recycled plastic lumber slats will not rot or absorb moisture, and can be sprayed with bleach or disinfectant without damage. After cleaning, excess water simply drains out the sides from the raised walls. The unit is theft and tamper proof. The translucent one-piece roof provides plenty of light, but it does not compromise its strength and acts as an effective barrier against sun, wind and rain.

The outhouse extension portion covers the decomposition pit where the solid waste breaks down. The trap door can be locked to ensure no tampering with the solid material or conveyor belt system.

## Product Specifications

### Re-Plast 100% Recycled Plastic Tongue and Groove Boards

Made from post-consumer and post-industrial waste plastic, the material is ecologically friendly and attractive. For this application the boards provide maximum durability with minimum maintenance required over their lifespan. Boards will not slip, warp, or absorb moisture making them easy to clean and to keep germs and odors under control.

### Colors Available for Re-Plast Lumber



### Durable Powder Coated Cast Aluminum Frames

#### Standard Colors

Brown Slate, Victor Ridge II, Nordic Lichen, Timeless Rust, Grey Gold, Textured Silver, Precious Sand, Groovy Red, Black Textured, Earth Clay, Noble Bronze, Modern Khaki, Flame Red, Pastel Orange, Signal Violet, Traffic Yellow, Ultramarine Blue, Water Blue, Yellow Green

## Product Details

- Long Lasting Stainless Steel Hardware
- Heavy Duty Door Hinge
- Durable UV Stable Polycarbonate Roof
- Adjustable Aluminum Vent Stack Support
- Easy assembly for 2 people in less than 2 hours

## Shipping Dimensions

Ships unassembled on a 84L x 48W x 28H pallet.  
Total Weight 860lbs

## Product Dimensions

Height: 97.5 inches / 248 cm  
Depth: 55 inches / 140 cm  
Width: 48 inches / 122 cm  
Weight: 650 lbs / 295 kg

## Recycled Content

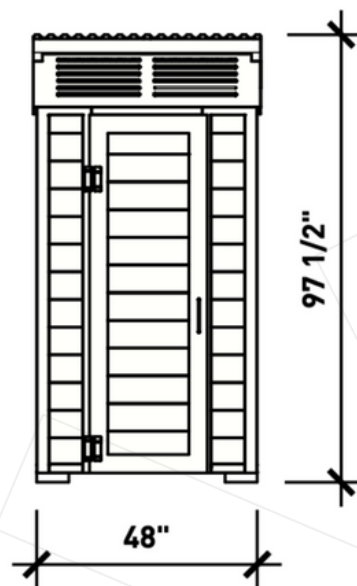
65% Recycled Content By Weight  
100% Recyclable

## Customized Solutions

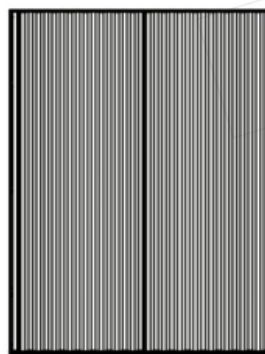
Custom Powder Coating (Setup Charges May Apply)  
Urinal, toilet paper dispenser, and sanitizer dispenser are not included. They can be provided if requested.

All Aluminum Floor is available.

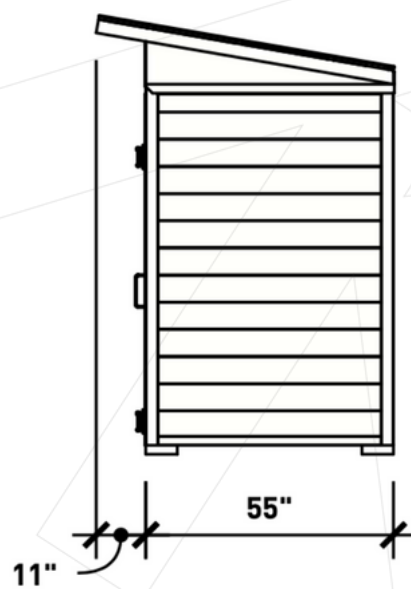
## Trailhead Single



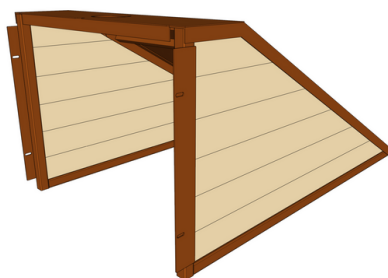
\*Front Dimensions



\*Roof



\*Side Dimensions



\*Outhouse extension